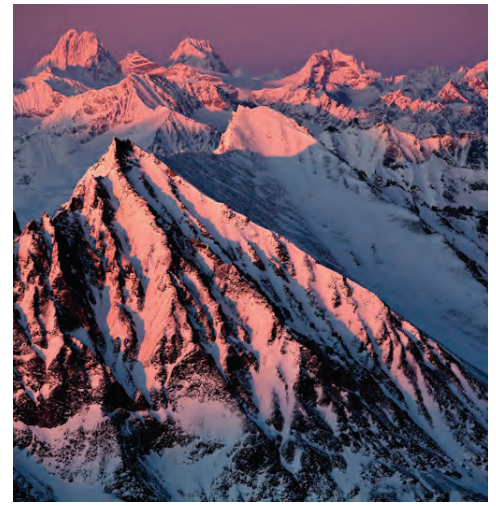
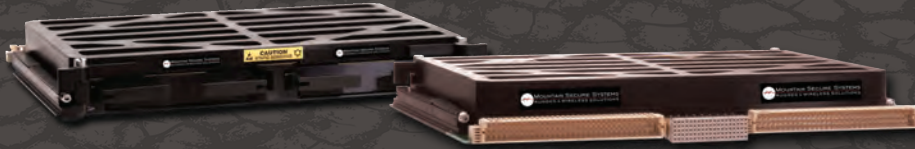




# RUGGED ELECTRONIC PACKAGING



## Customizable Features:

### 1. Two Removable, Packaged 2.5" SATA Solid State Drives

- ▶ Internal drives may be selected to meet program requirements
- ▶ Environmentally sealed enclosure to protect against rapid decompression, EMI, humidity, dust, salt fog, and condensation
- ▶ Lever Wedge-locks for docking
- ▶ Connectors rated for 100,000 insertion cycles
- ▶ Hot swappable
- ▶ Available encryption, secure erase, destructive erase, extended temperature and/or power protection options

### 2. 6U VME Docking Bay for On-Vehicle Integration

- ▶ SATA interface. Other interfaces available upon request
- ▶ Lever Wedge-locks for docking
- ▶ Designed and Qualified to mitigate resonance during extreme vibration and shock

### 3. PC Docking Bay for Off-Vehicle Data Downloading

- ▶ SATA interface



**MOUNTAIN SECURE SYSTEMS**  
**RUGGED & WIRELESS SOLUTIONS**  
 RUGGEDIZED ELECTRONICS TO OUTLAST HARSH ENVIRONMENTS

## Aleutian 6U VME Dual Removable, Sealed, SATA Solid State Drives

The Aleutian is a rugged 6U VME docking bay that houses two removable, sealed SATA memory devices containing 2.5" solid state drives.

Mountain Secure Systems (MSS) packages COTS electronics that incorporate sealed enclosures, removability, EMI/EMC shielding, extended temperature range, firmware control, conformal coating, and other techniques to meet rugged commercial and military standards, including program-specific requirements. By listening to and working closely with our customers, as well as building strong relationships with OEMs and distributors, MSS provides the most reliable rugged electronics in the marketplace. Simply put: No one can match MSS's meticulous attention to detail and proven track record of delivering world-class performance in harsh, demanding environments.

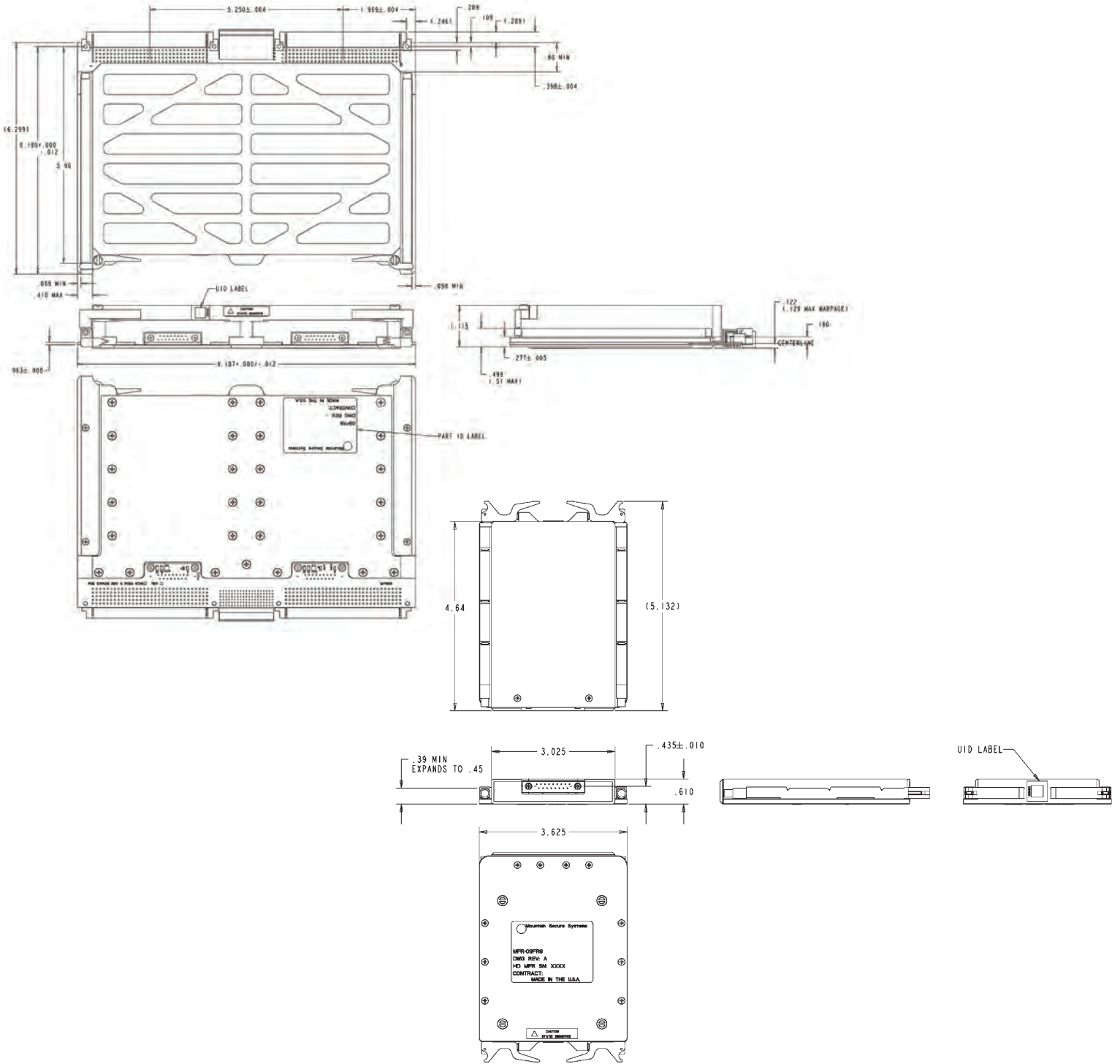
SPECIFICATIONS:			SOLID STATE DRIVE
Capacity			Selectable*
Drive Interface			SATA 1
Read Performance			100 MB Sec SATA
Write Performance			70 MB Sec SATA*
Input Voltage			+5 Volts
Temperature (°C)	Operating	Commercial	-20 to +75*
		Extended	-40 to +80*
	Non-Operating		-45 to +90*
Shock (Gs)	MIL-STD-810F, RTCA/DO-160D	Operating	20 @ 11ms
Vibration (Gs)	MIL-STD-810F, RTCA/DO-160D		7.7 Grms Random
Humidity			0% to 100%
Fungus Resistance (MIL-STD-810, 508.5)			Inert

\*MSS leverages the best data storage technologies available on the commercial market. Our expertise is properly ruggedizing, packaging, and integrating the memory to meet your program requirements. While we have close relationships with many of the OEM manufacturers, we are always open to utilizing your SSD choice or recommending the proper drive for your application. Capacity, MLC/SLC, speed, operating temperature and other performance characteristics may be dependent on drive selection.

PHYSICAL:	SOLID STATE DRIVE
Dimensions	1.2"H x 9.18"W x 6.3"D 6U, 2 VME Slots
Weight*	3.8 lbs

\*Depends on SSD selected.

# ALEUTIAN VME DOCKING BAY AND DRIVE



©2014 Mountain Secure Systems is a subsidiary of Phillips Service Industries

1350 Kansas Avenue  
Longmont, Colorado 80501-6545  
888.884.9344

[MountainSecureSystems.com](http://MountainSecureSystems.com)



**MADE IN THE USA**

CAGE Code: O9FR8  
9001:2008

AS9100B | J-STD-001

MSS-15-106 9/26/2014