

## RUGGED ELECTRONIC PACKAGING



### CUSTOMIZABLE FEATURES:

#### I REMOVABLE, PACKAGED 2.5" SATA SOLID STATE DRIVE

- Internal drive may be selected to meet program requirements
- Environmentally sealed enclosure to protect against rapid decompression, EMI, humidity, and condensation
- Captive thumb screws for docking. Wedge-locks available upon request.
- Connector rated for 100,000 insertion cycles
- Hot swappable
- Available encryption, secure erase, destructive erase, extended temperature and/or power protection options

#### II 6U VPX DOCKING BAY FOR ON-VEHICLE INTEGRATION

- SATA interface. Other interfaces available upon request

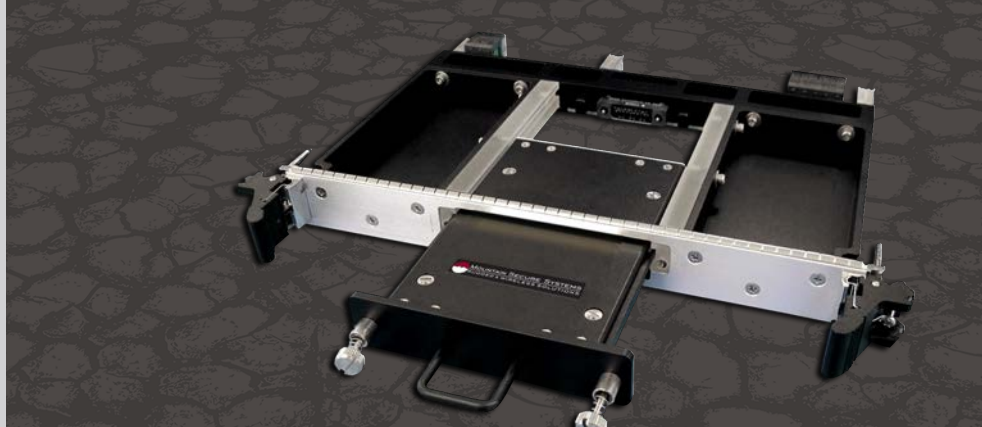
#### III DESKTOP DOCKING BAY FOR OFF-VEHICLE DATA DOWNLOADING

- SATA interface
- Power supply included



**MOUNTAIN  
SECURE  
SYSTEMS**

RELIABLE PERFORMANCE WHEN IT COUNTS



## PYRENEES 6U VPX REMOVABLE, SEALED, SATA SOLID STATE DRIVE

The Pyrenees is a removable, sealed, rugged SATA memory device containing a 2.5" solid state drive that mates with a 6U VPX docking bay.

Mountain Secure Systems (MSS) packages COTS electronics that incorporate sealed enclosures, removability, EMI/EMC shielding, extended temperature range, firmware control, conformal coating, and other techniques to meet rugged commercial and military standards, including program-specific requirements. By listening to and working closely with our customers, as well as building strong relationships with OEMs and distributors, MSS provides the most reliable rugged electronics in the marketplace. Simply put: No one can match MSS's meticulous attention to detail and proven track record of delivering world-class performance in harsh, demanding environments.

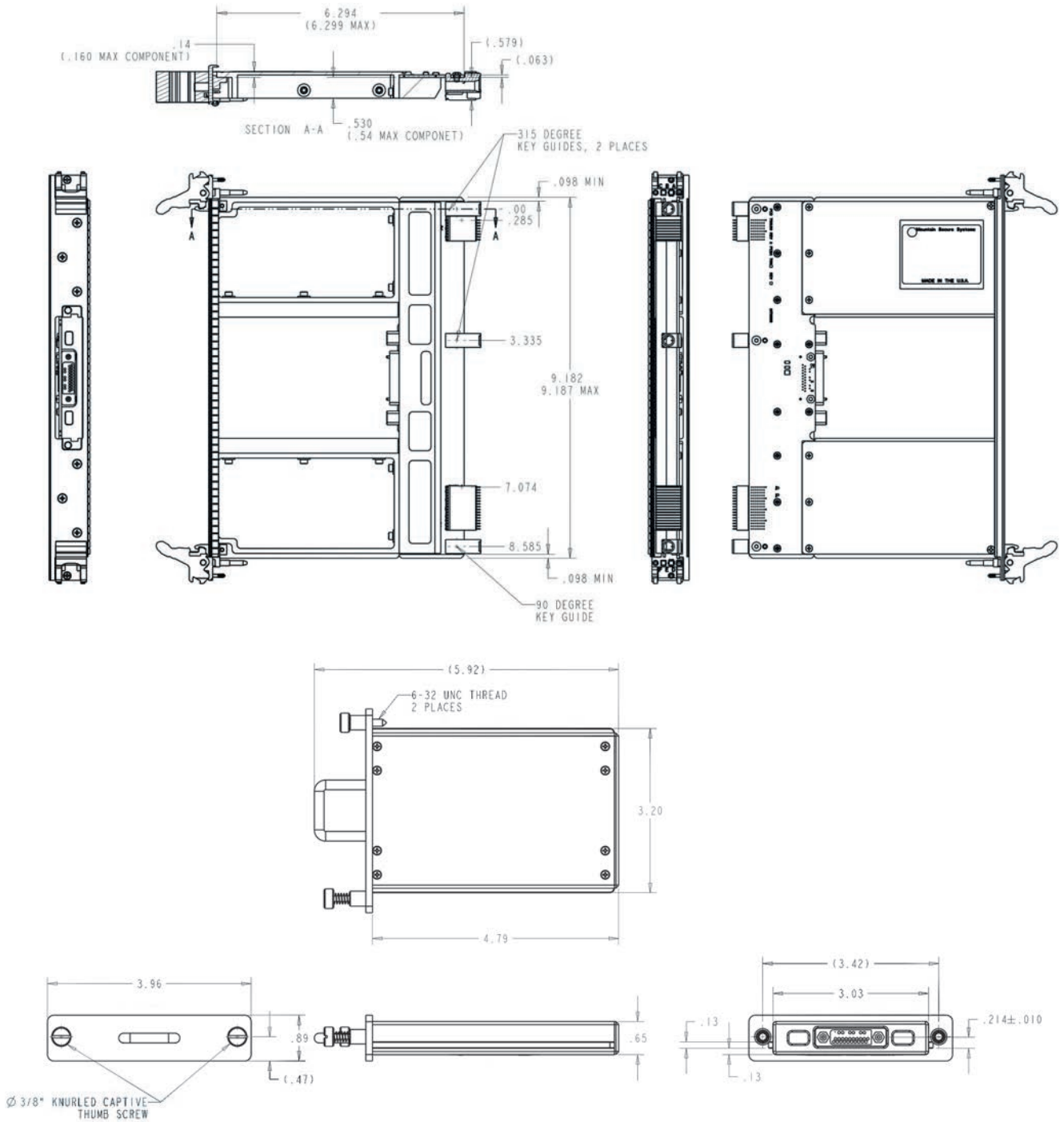
SPECIFICATIONS:		SOLID STATE DRIVE	
Capacity			Selectable*
Drive Interface			SATA 3
Read Performance			400 MB Sec SATA
Write Performance			240 MB Sec SATA*
Input Voltage			+5 Volts
Temperature (°C)	Operating	Commercial	-20 to +75*
		Extended	-40 to +80*
	Non-Operating		-45 to +90*
Shock (Gs)	MIL-STD-810, RTCA/DO-160D	Operating	15 @ 11ms
Vibration (Gs)	MIL-STD-810, RTCA/DO-160D		7.7 Grms Random
Humidity			0% to 100%
Fungus Resistance	(MIL-STD-810, 508.5)		Inert
ESD			EN61000-4-2 A 8kV

\*MSS leverages the best data storage technologies available on the commercial market. Our expertise is properly ruggedizing, packaging, and integrating the memory to meet your program requirements. While we have close relationships with many of the OEM manufacturers, we are always open to utilizing your SSD choice or recommending the proper drive for your application. Capacity, MLC/SLC, speed, operating temperature and other performance characteristics may be dependent on drive selection.

PHYSICAL:		SOLID STATE DRIVE	
Dimensions			1"H x 9.18" W x 6.92" D, 6U 5HP
Weight*			1.9 lbs

\*Depends on SSD selected.

# PYRENEES VPX DOCKING BAY AND DRIVE



**MOUNTAIN  
SECURE  
SYSTEMS**

RELIABLE PERFORMANCE WHEN IT COUNTS

Made in the USA

1350 Kansas Avenue  
Longmont, Colorado 80501-6545  
888.884.9344

CAGE Code:09FR8  
9001:2008  
AS9100B | J-STD-001

[www.mountainsecuresystems.com](http://www.mountainsecuresystems.com)